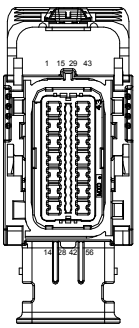


REVISION HISTORY				
LEVEL	DESCRIPTION	DATE	DRN	APP
1	RELEASE	10/18/16	FD	

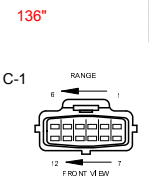
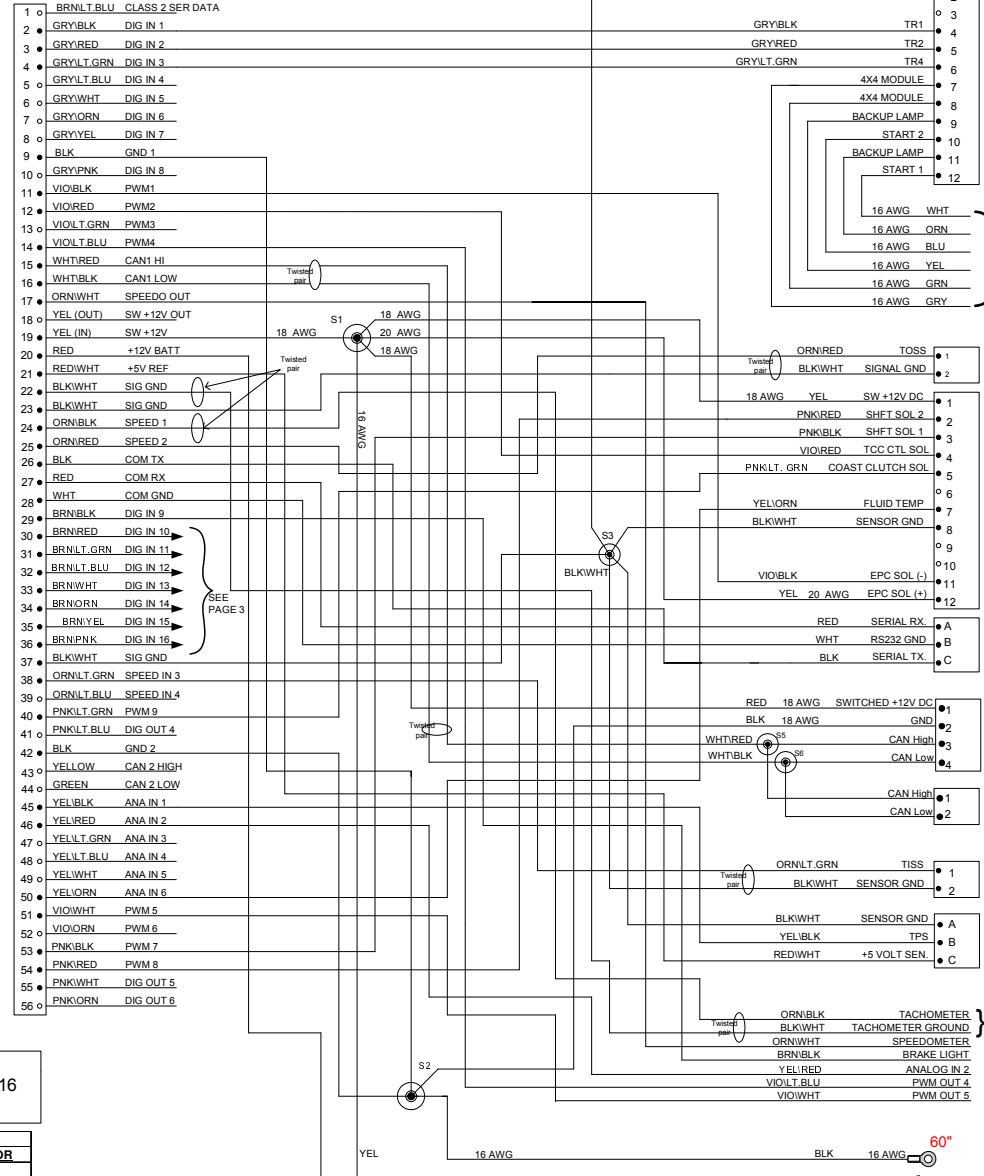


QTY	DESCRIPTION	PCS P/N	NOTES
1	CONNECTOR	CON-1202	WHT
38	TERMINALS	CON-1203	
1	CONNECTOR COVER	CON-1204	
20	CAN WHT PLUG		

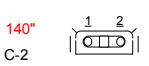
SIGNAL	TCU OUTPUT	DESTINATION	TCU PIN/COLOR
TOSS	SPEED-3	TOSS CON	24 ORN/BLK
TACH	SPEED-2	UNTERM	25 ORN/RED
E-TISS	SPEED-1	TISS CON	38 ORN/LT GRN
I-TISS	SPEED-4	TRANS CN	39 ORN/LT BLU

SPLICE INFORMATION		
S-#	FUNCTION	COLOR
S1	SWITCHED +12V DC	RED
S2	GROUND	BLK
S3	SENSOR GROUND	BLK/WHT
S4	NOT USED	NONE
S5	CAN HIGH	WHT/RED
S6	CAN LOW	WHT/BLK

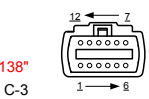
FT & F2			
QTY	DESCRIPTION	PCS P/N	NOTES
2	CONNECTOR	CON-2200	
2	FUSE CAP.	CON-2201	BLK
2	TPA	CON-2202	BLU
4	TERMINAL	CON-1020	(18-16 AWG)
1	FUSE - 1	CON-2217	3A
1	FUSE - 2	CON-2221	10A
4	CABLE SEAL	CON-1001	GRN



QTY	DESCRIPTION	PCS P/N	NOTES
1	Connector	CON-2100	Black
1	Secondary Lock Plate	CON-2102	Yellow
10	Terminal	CON-2103	
4	Cable Seal	CON-2105	Orange
6	Cable Seal	CON-2106	Violet
2	Cavity Plug	CON-2107	Black



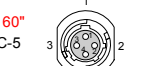
QTY	DESCRIPTION	PCS P/N	NOTES
1	Connector	CON-2130	Black
1	Wedglock	CON-2125	Red
2	Terminal	CON-2121	



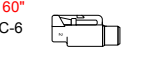
QTY	DESCRIPTION	PCS P/N	NOTES
1	Connector	CON-2133	Gray
1	TPA	CON-2128	Red
9	Terminal	CON-2121	



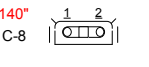
QTY	DESCRIPTION	PCS P/N	NOTES
1	CONNECTOR	CON-3416	
3	TERMINALS	CON-1038	
1	TPA	CON-3417	CREAM
3	CABLE SEALS	CON-1027	WHT



QTY	DESCRIPTION	PCS P/N	NOTES
1	CONNECTOR	CON-0065	
4	TERMINALS	CON-0051	



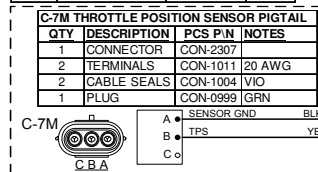
QTY	DESCRIPTION	PCS P/N	NOTES
1	CONNECTOR	CON-5050	
2	TERMINALS	CON-5200	(20-18gauge)
1	WEDGE LOCK	CON-5100	ORN



QTY	DESCRIPTION	PCS P/N	NOTES
1	Connector	CON-2130	Black
1	Wedglock	CON-2125	Red
2	Terminal	CON-2121	



QTY	DESCRIPTION	PCS P/N	NOTES
1	CONNECTOR	CON-2302	
3	TERMINALS	CON-1006	
3	CABLE SEALS	CON-1004	VIO



QTY	DESCRIPTION	PCS P/N	NOTES
1	CONNECTOR	CON-2307	
2	TERMINALS	CON-1011	20 AWG
2	CABLE SEALS	CON-1004	VIO
1	PLUG	CON-0999	GRN



60° UNTERMINATED

APPLICABLE STANDARDS

- ASME Y14.100-200
- ASME Y14.5M-1994
- IPC/WHMA-A-620A-CLASS 2
- MARK IAW MIL-STD-130.

NOTES

- 1.) WIRE LENGTH TOLERANCE +/- 1/2 INCH.
- 2.) WIRE GAUGE IS 20 AWG UNLESS OTHERWISE STATED.
- 3.) TAPE ALL LOOM JOINTS UNLESS OTHERWISE STATED.
- 4.) TWIST INDICATED WIRES AT LEAST 10-12 TURNS PER FOOT!
- 5.) PLACE TAGS NO MORE THAN 2" FROM CONNECTOR. PLACE TAGS FOR UNTERMINATED WIRES NO MORE THAN 2" FROM UNTERMINATED END.
- 6.) WIRE TYPE IS TXL UNLESS OTHERWISE STATED.

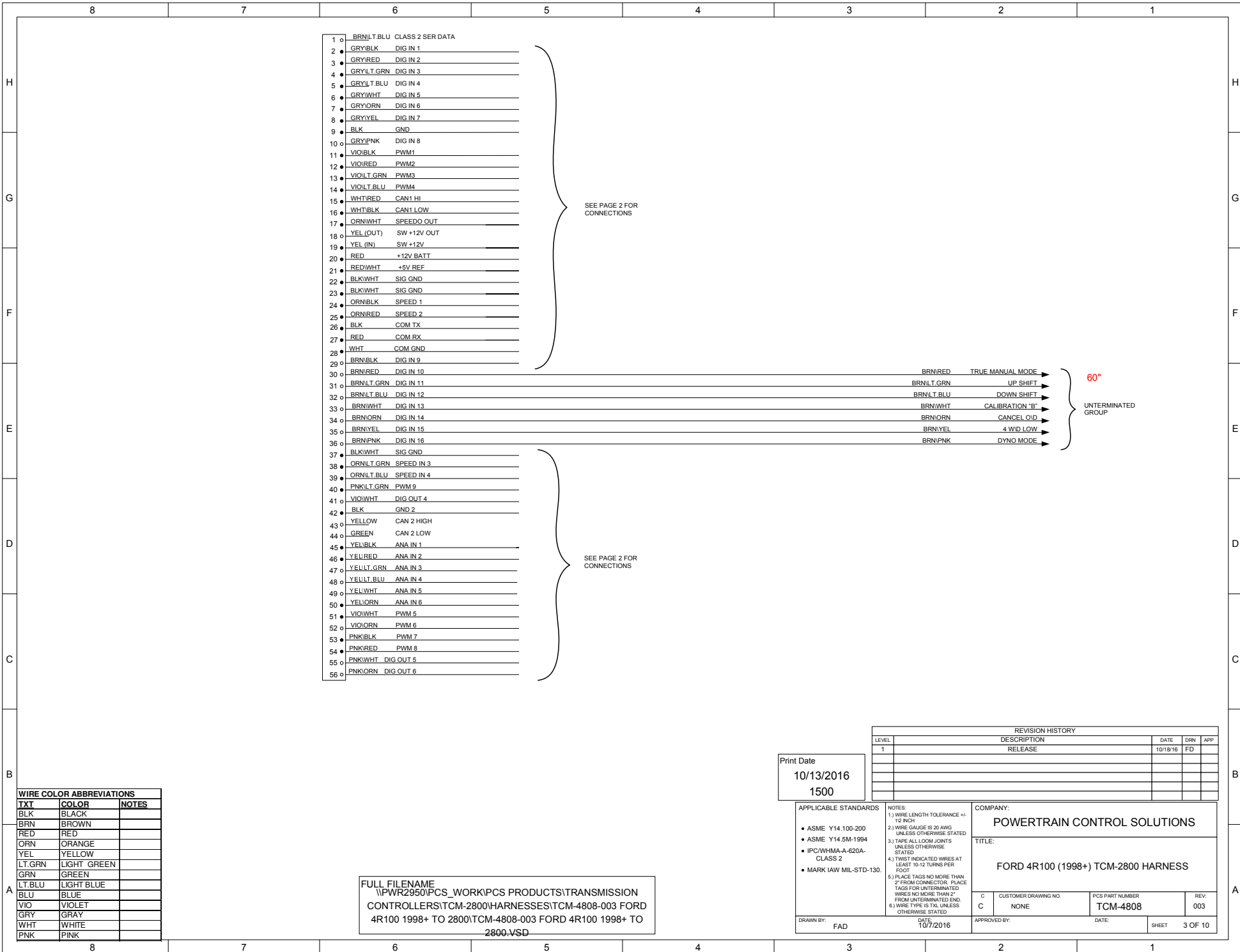
COMPANY: POWERTRAIN CONTROL SOLUTIONS

TITLE: FORD 4R100 (1998+) TCM-2800 HARNESS

C	CUSTOMER DRAWING NO.	PCS PART NUMBER	REV:
C	NONE	TCM-4808	003
DRAWN BY: FAD		DATE: 10/7/2016	APPROVED BY:
SHEET 2 OF 10			

CHASSIS GND			
QTY	DESCRIPTION	PCS P/N	NOTES
1	RING TERM.	CON-0350	

Print Date  
10/13/2016  
1500



- 1 0 BRNLT.BLU CLASS 2 SER DATA
- 2 0 GRYBLK DIG IN 1
- 3 0 GRYRED DIG IN 2
- 4 0 GRYLT.GRN DIG IN 3
- 5 0 GRYLT.BLU DIG IN 4
- 6 0 GRYWHT DIG IN 5
- 7 0 GRYORN DIG IN 6
- 8 0 GRYYEL DIG IN 7
- 9 0 BLK GND
- 10 0 GRYPNK DIG IN 8
- 11 0 VIOBLK PWM1
- 12 0 VIORED PWM2
- 13 0 VIOILT.GRN PWM3
- 14 0 VIOILT.BLU PWM4
- 15 0 WHTRED CAN1 HI
- 16 0 WHTBLK CAN1 LOW
- 17 0 ORNWHT SPEEDO OUT
- 18 0 YEL (OUT) SW +12V OUT
- 19 0 YEL (IN) SW +12V
- 20 0 RED +12V BATT
- 21 0 REDWHT +5V REF
- 22 0 BLKWHT SIG GND
- 23 0 BLKWHT SIG GND
- 24 0 ORNBLK SPEED 1
- 25 0 ORNRED SPEED 2
- 26 0 BLK COM TX
- 27 0 RED COM RX
- 28 0 WHT COM GND
- 29 0 BRNBLK DIG IN 9
- 30 0 BRNRED DIG IN 10
- 31 0 BRNLT.GRN DIG IN 11
- 32 0 BRNLT.BLU DIG IN 12
- 33 0 BRNWHIT DIG IN 13
- 34 0 BRNORN DIG IN 14
- 35 0 BRNYEL DIG IN 15
- 36 0 BRNPNK DIG IN 16
- 37 0 BLKWHT SIG GND
- 38 0 ORNLT.GRN SPEED IN 3
- 39 0 ORNLT.BLU SPEED IN 4
- 40 0 PNKILT.GRN PWM 9
- 41 0 VIOWHT DIG OUT 4
- 42 0 BLK GND 2
- 43 0 YELLOW CAN 2 HIGH
- 44 0 GREEN CAN 2 LOW
- 45 0 YELBLK ANA IN 1
- 46 0 YELRED ANA IN 2
- 47 0 YELLT.GRN ANA IN 3
- 48 0 YELLT.BLU ANA IN 4
- 49 0 YELWHT ANA IN 5
- 50 0 YELORN ANA IN 6
- 51 0 VIOWHT PWM 5
- 52 0 VIOORN PWM 6
- 53 0 PNKBLK PWM 7
- 54 0 PNKRED PWM 8
- 55 0 PNKWHT DIG OUT 5
- 56 0 PNKIORN DIG OUT 6

SEE PAGE 2 FOR CONNECTIONS

SEE PAGE 2 FOR CONNECTIONS

- BRNRED TRUE MANUAL MODE
- BRNLT.GRN UP SHIFT
- BRNLT.BLU DOWN SHIFT
- BRNWHIT CALIBRATION 'B'
- BRNORN CANCEL O/D
- BRNYEL 4 W/D LOW
- BRNPNK DYNO MODE

60°

UNTERMINATED GROUP

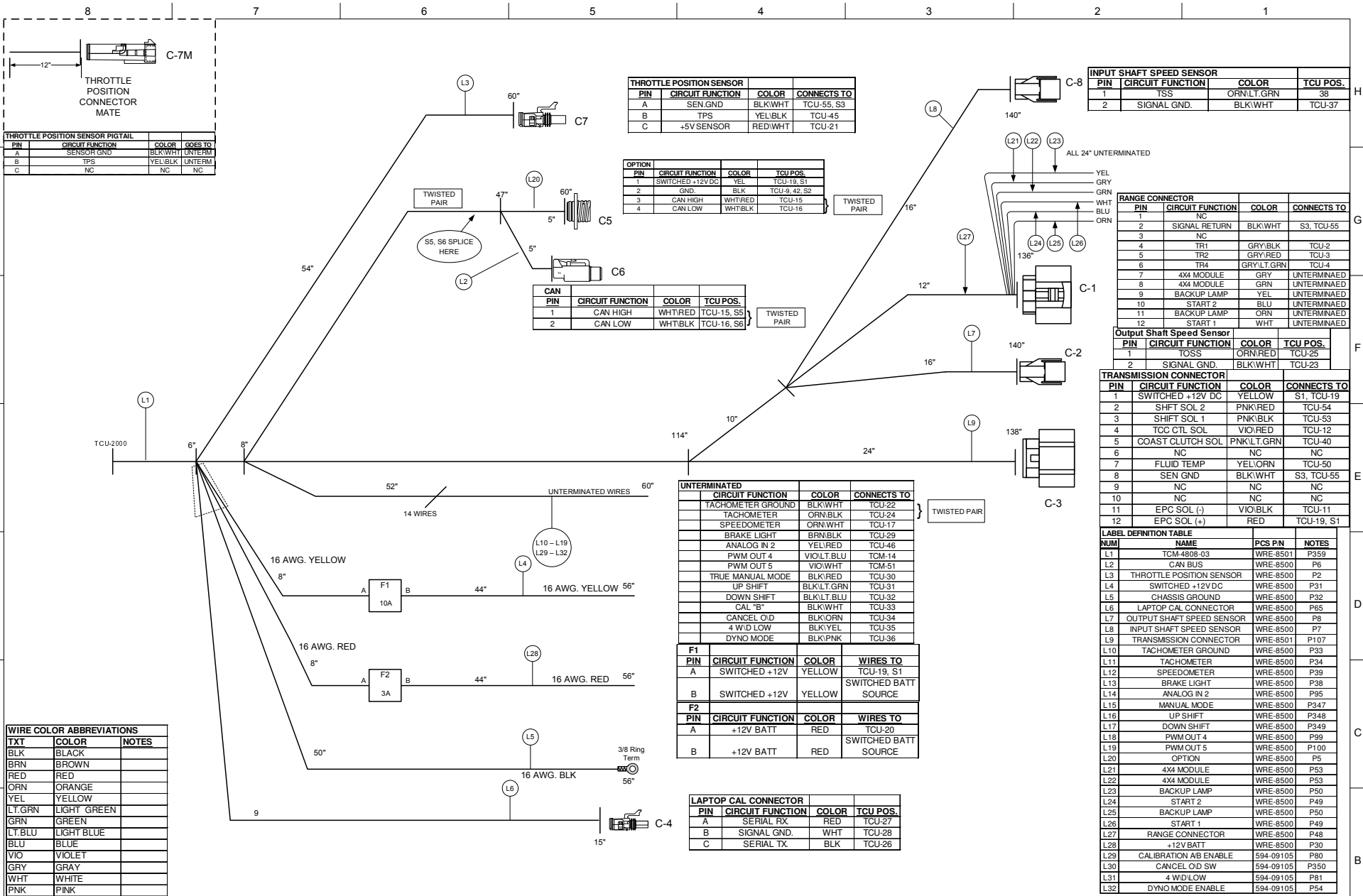
WIRE COLOR ABBREVIATIONS		
TXI	COLOR	NOTES
BLK	BLACK	
BRN	BROWN	
RED	RED	
ORN	ORANGE	
YEL	YELLOW	
LT.GRN	LIGHT GREEN	
GRN	GREEN	
LT.BLU	LIGHT BLUE	
BLU	BLUE	
VIO	VIOLET	
GRY	GRAY	
WHT	WHITE	
PNK	PINK	

FULL FILENAME  
 \\PWR2950\PCS\_WORK\PCS PRODUCTS\TRANSMISSION  
 CONTROLLERS\TCM-2800\HARNESSES\TCM-4808-003 FORD  
 4R100 1998+ TO 2800\TCM-4808-003 FORD 4R100 1998+ TO  
 2800.VSD

Print Date  
 10/13/2016  
 1500

REVISION HISTORY			
LEVEL	DESCRIPTION	DATE	DRN APP
1	RELEASE	10/18/16	FD

<b>APPLICABLE STANDARDS</b> <ul style="list-style-type: none"> <li>• ASME Y14.100-200</li> <li>• ASME Y14.5M-1994</li> <li>• IPC/WHMA-A-620A-CLASS 2</li> <li>• MARK IAW MIL-STD-130.</li> </ul>	<b>NOTES:</b> 1.) WIRE LENGTH TOLERANCE +/- 1/2 INCH 2.) WIRE GAUGE IS 20 AWG UNLESS OTHERWISE STATED 3.) TAPE ALL LOOM JOINTS UNLESS OTHERWISE STATED 4.) TWIST INDICATED WIRES AT LEAST 10-12 TURNS PER FOOT 5.) PLACE TAGS NO MORE THAN 2" FROM CONNECTOR. PLACE TAGS FOR UNTERMINATED WIRES NO MORE THAN 2" FROM UNTERMINATED END. 6.) WIRE TYPE IS TOL UNLESS OTHERWISE STATED	<b>COMPANY:</b> <b>POWERTRAIN CONTROL SOLUTIONS</b>  <b>TITLE:</b> <b>FORD 4R100 (1998+) TCM-2800 HARNESS</b>
<b>DRAWN BY:</b> FAD	<b>DATE:</b> 10/7/2016	<b>APPROVED BY:</b>
<b>CUSTOMER DRAWING NO.:</b> NONE		<b>PCS PART NUMBER:</b> TCM-4808
<b>REV:</b> 003		<b>SHEET:</b> 3 OF 10



PIN	CIRCUIT FUNCTION	COLOR	GOES TO
A	SENSOR GND	BLK/WHT	UNTERM
B	TPS	YEL/BLK	UNTERM
C	NC	NC	NC

PIN	CIRCUIT FUNCTION	COLOR	CONNECTS TO
A	SEN GND	BLK/WHT	TCU-55, S3
B	TPS	YEL/BLK	TCU-45
C	+5V SENSOR	RED/WHT	TCU-21

OPTION	PIN	CIRCUIT FUNCTION	COLOR	TCU POS.
1		SWITCHED +12V DC	YEL	TCU-19, S1
2		GND	BLK	TCU-9, 42, S2
3		CAN HIGH	WHT/RED	TCU-15
4		CAN LOW	WHT/BLK	TCU-16

CAN	PIN	CIRCUIT FUNCTION	COLOR	TCU POS.
1		CAN HIGH	WHT/RED	TCU-15, S5
2		CAN LOW	WHT/BLK	TCU-16, S6

CIRCUIT FUNCTION	COLOR	CONNECTS TO
TACHOMETER GROUND	BLK/WHT	TCU-22
TACHOMETER	ORN/BLK	TCU-24
SPEEDOMETER	ORN/WHT	TCU-17
BRAKE LIGHT	BRN/BLK	TCU-29
ANALOG IN 2	YEL/RED	TCU-46
PWM OUT 4	VIO/LT.BLU	TCM-14
PWM OUT 5	VIO/WHT	TCM-51
TRUE MANUAL MODE	BLK/RED	TCU-30
UP SHIFT	BLK/LT.GRN	TCU-31
DOWN SHIFT	BLK/LT.BLU	TCU-32
CAL "B"	BLK/WHT	TCU-33
CANCEL O/D	BLK/ORN	TCU-34
4 W/D LOW	BLK/YEL	TCU-35
DYNO MODE	BLK/PNK	TCU-36

F1	PIN	CIRCUIT FUNCTION	COLOR	WIRES TO
A		SWITCHED +12V	YELLOW	TCU-19, S1
B		SWITCHED +12V	YELLOW	SWITCHED BATT SOURCE

F2	PIN	CIRCUIT FUNCTION	COLOR	WIRES TO
A		+12V BATT	RED	TCU-20
B		+12V BATT	RED	SWITCHED BATT SOURCE

LAPTOP CAL CONNECTOR	PIN	CIRCUIT FUNCTION	COLOR	TCU POS.
A		SERIAL RX	RED	TCU-27
B		SIGNAL GND.	WHT	TCU-28
C		SERIAL TX	BLK	TCU-26

INPUT SHAFT SPEED SENSOR			
PIN	CIRCUIT FUNCTION	COLOR	TCU POS.
1	TSS	ORN/LT.GRN	38
2	SIGNAL GND.	BLK/WHT	TCU-37

RANGE CONNECTOR			
PIN	CIRCUIT FUNCTION	COLOR	CONNECTS TO
1	NC		
2	SIGNAL RETURN	BLK/WHT	S3, TCU-55
3	NC		
4	TR1	GRY/BLK	TCU-2
5	TR2	GRY/RED	TCU-3
6	TR4	GRY/LT.GRN	TCU-4
7	4X4 MODULE	GRY	UNTERMNAED
8	4X4 MODULE	GRN	UNTERMNAED
9	BACKUP LAMP	YEL	UNTERMNAED
10	START 2	BLU	UNTERMNAED
11	BACKUP LAMP	ORN	UNTERMNAED
12	START 1	WHT	UNTERMNAED

Output Shaft Speed Sensor			
PIN	CIRCUIT FUNCTION	COLOR	TCU POS.
1	TOSS	ORN/RED	TCU-25
2	SIGNAL GND.	BLK/WHT	TCU-23

TRANSMISSION CONNECTOR			
PIN	CIRCUIT FUNCTION	COLOR	CONNECTS TO
1	SWITCHED +12V DC	YELLOW	S1, TCU-19
2	SHIFT SOL 2	PNK/RED	TCU-54
3	SHIFT SOL 1	PNK/BLK	TCU-53
4	TCC CTL SOL	VIO/RED	TCU-12
5	COAST CLUTCH SOL	PNK/LT.GRN	TCU-40
6	NC	NC	NC
7	FLUID TEMP	YEL/ORN	TCU-50
8	SEN GND	BLK/WHT	S3, TCU-55
9	NC	NC	NC
10	NC	NC	NC
11	EPC SOL (-)	VIO/BLK	TCU-11
12	EPC SOL (+)	RED	TCU-19, S1

LABEL DEFINITION TABLE			
NUM	NAME	PCS PN	NOTES
L1	TCM-4808-03	WRE-8501	P359
L2	CAN BUS	WRE-8500	P6
L3	THROTTLE POSITION SENSOR	WRE-8500	P2
L4	SWITCHED +12V DC	WRE-8500	P31
L5	CHASSIS GROUND	WRE-8500	P32
L6	LAPTOP CAL CONNECTOR	WRE-8500	P65
L7	OUTPUT SHAFT SPEED SENSOR	WRE-8500	P8
L8	INPUT SHAFT SPEED SENSOR	WRE-8500	P7
L9	TRANSMISSION CONNECTOR	WRE-8501	P107
L10	TACHOMETER GROUND	WRE-8500	P33
L11	TACHOMETER	WRE-8500	P34
L12	SPEEDOMETER	WRE-8500	P39
L13	BRAKE LIGHT	WRE-8500	P38
L14	ANALOG IN 2	WRE-8500	P95
L15	MANUAL MODE	WRE-8500	P347
L16	UP SHIFT	WRE-8500	P348
L17	DOWN SHIFT	WRE-8500	P349
L18	PWM OUT 4	WRE-8500	P99
L19	PWM OUT 5	WRE-8500	P100
L20	OPTION	WRE-8500	P5
L21	4X4 MODULE	WRE-8500	P53
L22	4X4 MODULE	WRE-8500	P53
L23	BACKUP LAMP	WRE-8500	P50
L24	START 2	WRE-8500	P49
L25	BACKUP LAMP	WRE-8500	P50
L26	START 1	WRE-8500	P49
L27	RANGE CONNECTOR	WRE-8500	P48
L28	+12V BATT	WRE-8500	P30
L29	CALIBRATION AB ENABLE	594-09105	P80
L30	CANCEL O/D SW	594-09105	P350
L31	4 W/D LOW	594-09105	P81
L32	DYNO MODE ENABLE	594-09105	P54

WIRE COLOR ABBREVIATIONS		
TXT	COLOR	NOTES
BLK	BLACK	
BRN	BROWN	
RED	RED	
ORN	ORANGE	
YEL	YELLOW	
LT.GRN	LIGHT GREEN	
GRN	GREEN	
LT.BLU	LIGHT BLUE	
BLU	BLUE	
VIO	VIOLET	
GRY	GRAY	
WHT	WHITE	
PNK	PINK	

Print Date  
10/13/2016  
1500

SPLICE INFORMATION		
S#	FUNCTION	COLOR
S1	SWITCHED +12V DC	RED
S2	GROUND	BLK
S3	SENSOR GROUND	BLK/WHT
S4	NOT USED	NONE
S5	CAN HIGH	WHT/RED
S6	CAN LOW	WHT/BLK

REVISION HISTORY				
LEVEL	DESCRIPTION	DATE	DRN	APP
1	RELEASE	10/18/16	FD	

APPLICABLE STANDARDS

- ASME Y14.100-200
- ASME Y14.5M-1994
- IPC/WMA A-620A-CLASS 2
- MARK IAW MIL-STD-130.

NOTES

- WIRE LENGTH TOLERANCE +/- .12 INCH
- WIRE GAUGE IS 20 AWG UNLESS OTHERWISE STATED
- TAPE ALL LOCK JOINTS UNLESS OTHERWISE STATED
- TWIST INDICATED WIRES AT LEAST 10-12 TURNS PER FOOT
- PLACE TAGS NO MORE THAN 2" FROM CONNECTOR. PLACE TAGS FOR UNTERMINATED WIRES NO MORE THAN 2" FROM UNTERMINATED END.
- WIRE TYPE IS TXL UNLESS OTHERWISE STATED.

COMPANY:  
**POWERTRAIN CONTROL SOLUTIONS**

TITLE:  
**FORD 4R100 (1998+) TCM-2800 HARNESS**

C	CUSTOMER DRAWING NO.	PCS PART NUMBER	REV.
	NONE	TCM-4808	003

DRAWN BY: FAD DATE: 10/7/2016 APPROVED BY: SHEET 4 OF 10